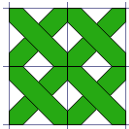
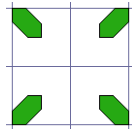


Stitch Types

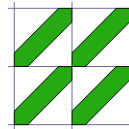
Positions of each stitch type in grid squares. Stitches are shown in 2D.



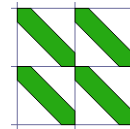
Full Cross



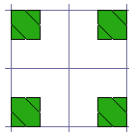
Quarter Cross



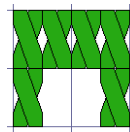
Half Cross Forward



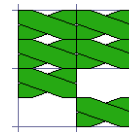
Half Cross Backward



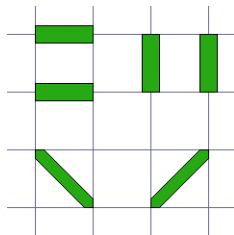
Mini Cross



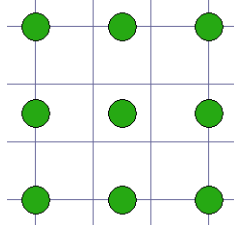
Half Width Cross



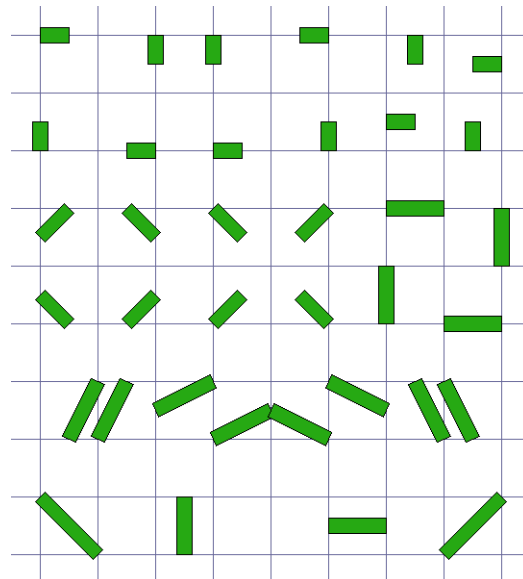
Half Height Cross



Standard Backstitch

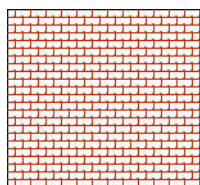


French Knot

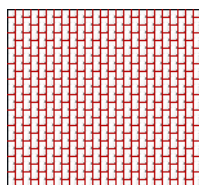


Freehand Backstitch

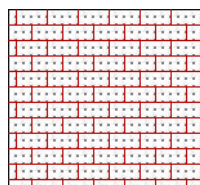
Blackwork Basic



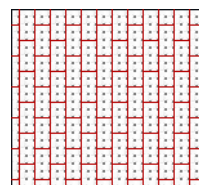
Brick 1



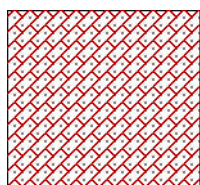
Brick 2



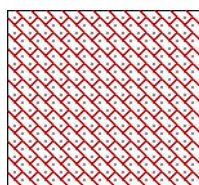
Brick 3



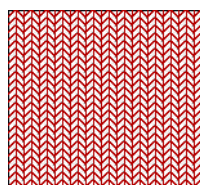
Brick 4



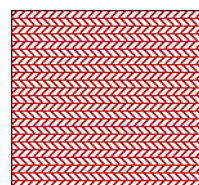
Brick 5



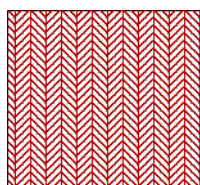
Brick 6



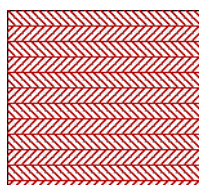
Chevron 1



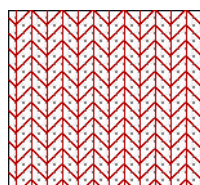
Chevron 2



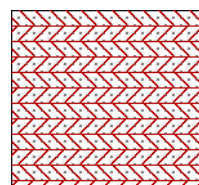
Chevron 3



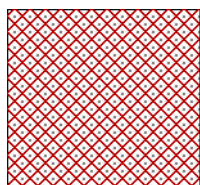
Chevron 4



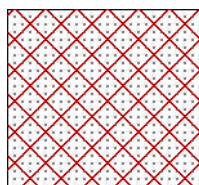
Chevron 5



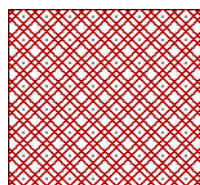
Chevron 6



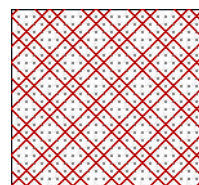
Lattice 1



Lattice 2

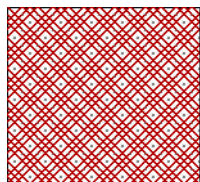


Lattice 3

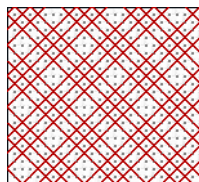


Lattice 4

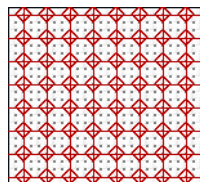
Pattern color changed from black to red for these examples.



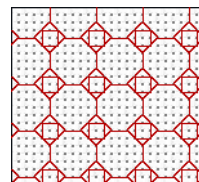
Lattice 5



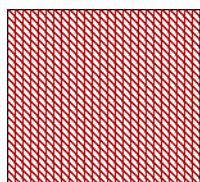
Lattice 6



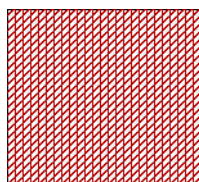
Octagon 1



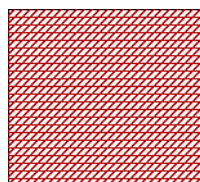
Octagon 2



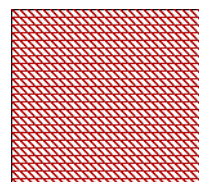
Scale 1



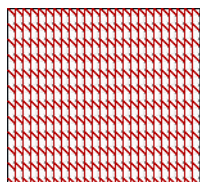
Scale 2



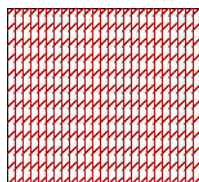
Scale 3



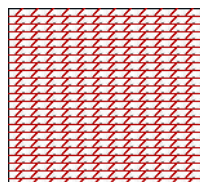
Scale 4



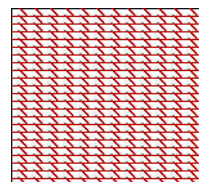
Scale 5



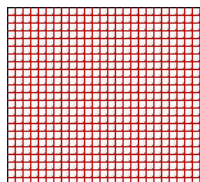
Scale 6



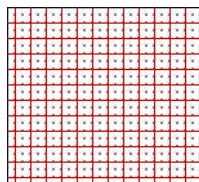
Scale 7



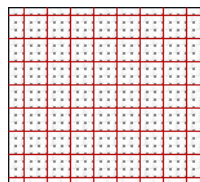
Scale 8



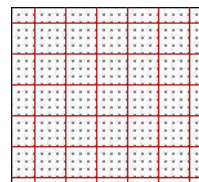
Square 1



Square 2

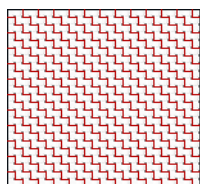


Square 3

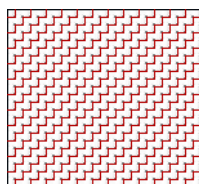


Square 4

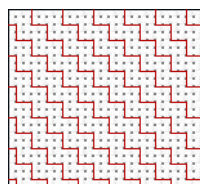
Pattern color changed from black to red for these examples.



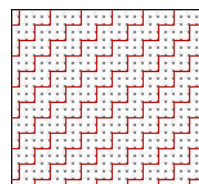
Steps 1



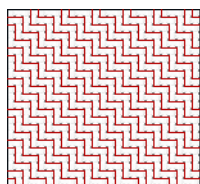
Steps 2



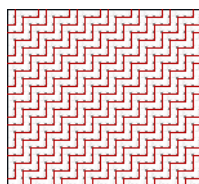
Steps 3



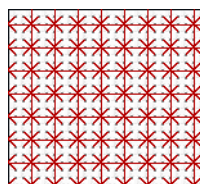
Steps 4



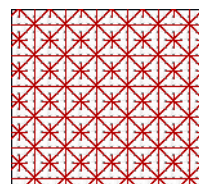
Steps 5



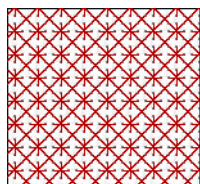
Steps 6



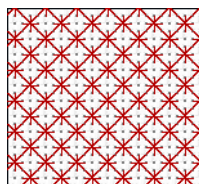
Traditional 1



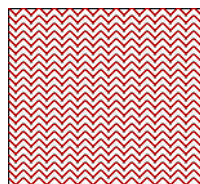
Traditional 2



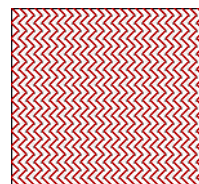
Traditional 3



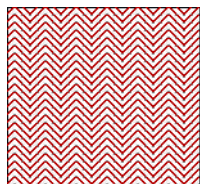
Traditional 4



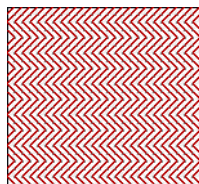
Waves 1



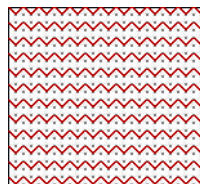
Waves 2



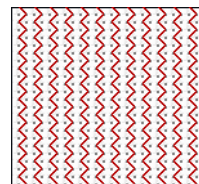
Waves 3



Waves 4

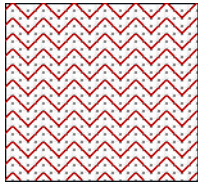


Waves 5

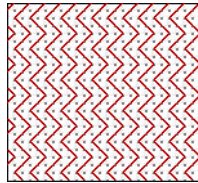


Waves 6

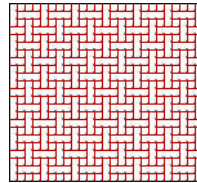
Pattern color changed from black to red for these examples.



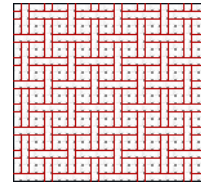
Waves 7



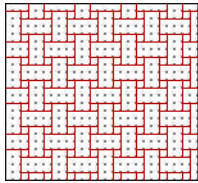
Waves 8



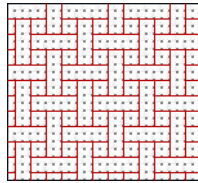
Weave 1



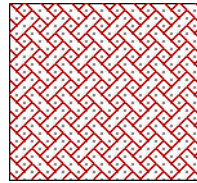
Weave 2



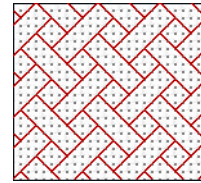
Weave 3



Weave 4



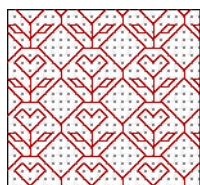
Weave 5



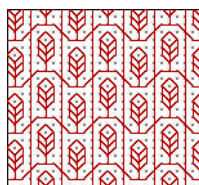
Weave 6

Pattern color changed from black to red for these examples.

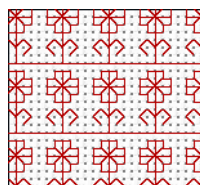
Blackwork Fancy



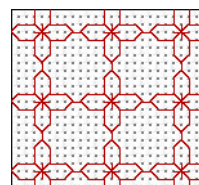
Flower 1



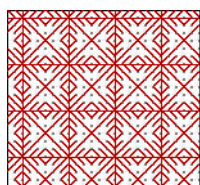
Flower 2



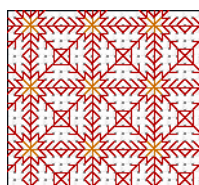
Flower 3



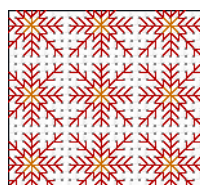
Flower 4



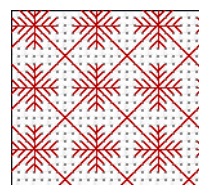
Snowflake 1



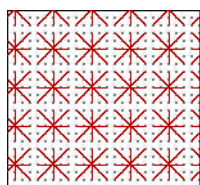
Snowflake 2



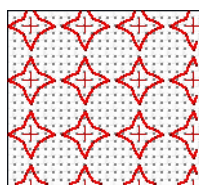
Snowflake 3



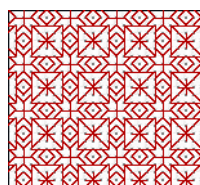
Snowflake 4



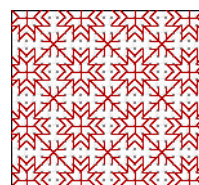
Star 1



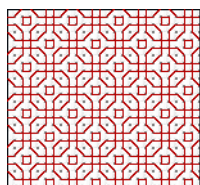
Star 2



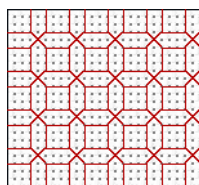
Star 3



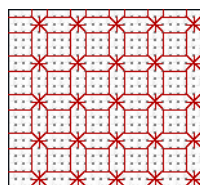
Star 4



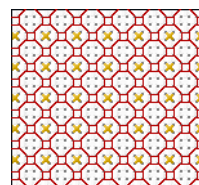
Tile 1



Tile 2

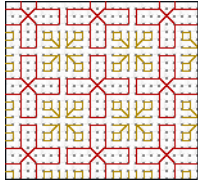


Tile 3

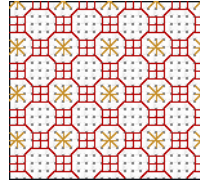


Tile 4

Pattern color changed from black to red for these examples.



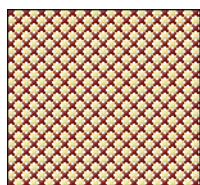
Tile 5



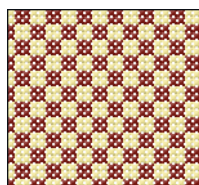
Tile 6

Pattern color changed from black to red for these examples.

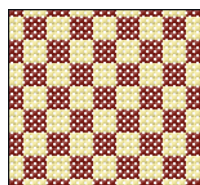
Cross Basic



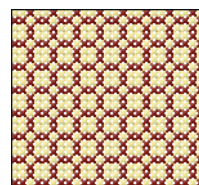
Check 1



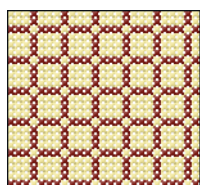
Check 2



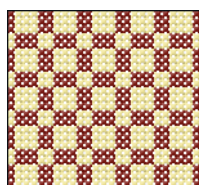
Check 3



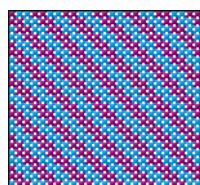
Check 4



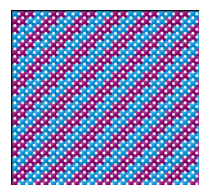
Check 5



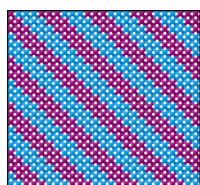
Check 6



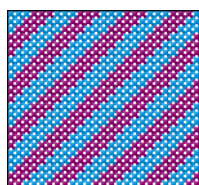
Diagonal 1



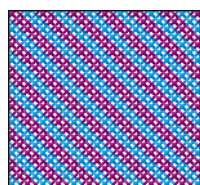
Diagonal 2



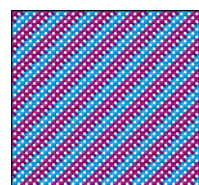
Diagonal 3



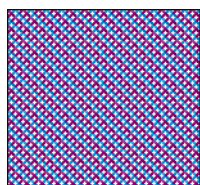
Diagonal 4



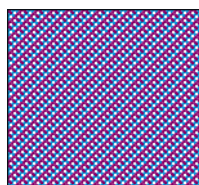
Diagonal 5



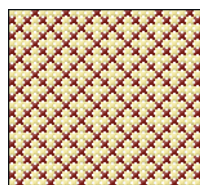
Diagonal 6



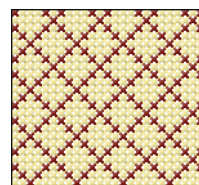
Diagonal 7



Diagonal 8

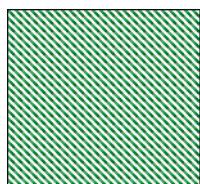


Diamond 1

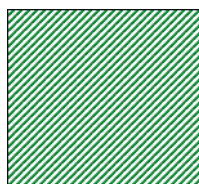


Diamond 2

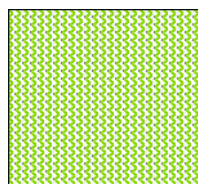
Examples drawn with Rectangle shape as Filled Backstitch.



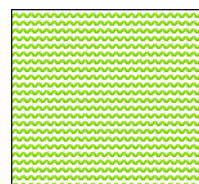
Half Backward



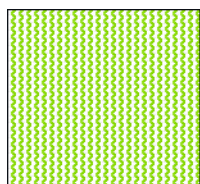
Half Forward



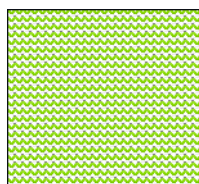
Half Full Left



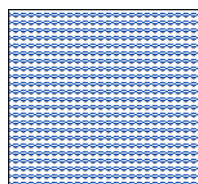
Half Full Low



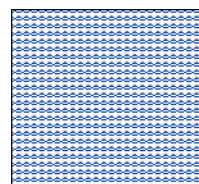
Half Full Right



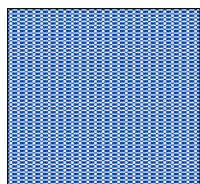
Half Full Top



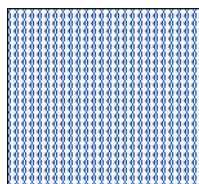
Half Height Low



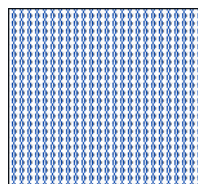
Half Height Top



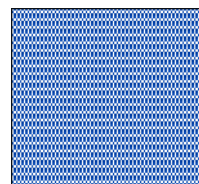
Half Height



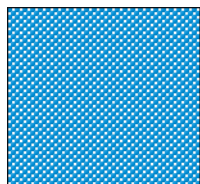
Half Width Left



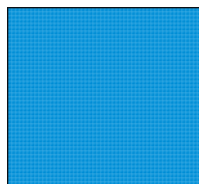
Half Width Right



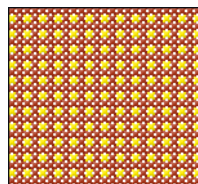
Half Width



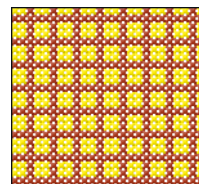
Mini Cross Sparse



Mini Cross

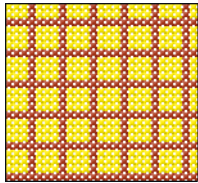


Square 1

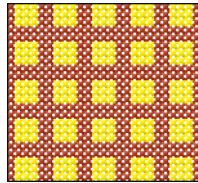


Square 2

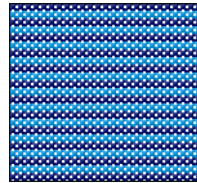
Place fill patterns in any of nine shapes.



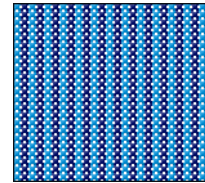
Square 3



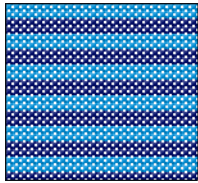
Square 4



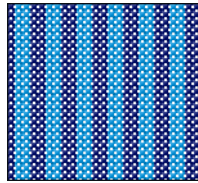
Stripes 1



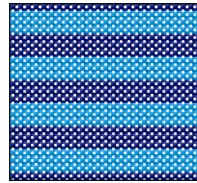
Stripes 2



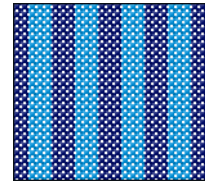
Stripes 3



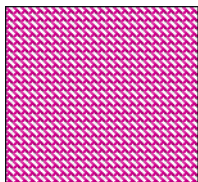
Stripes 4



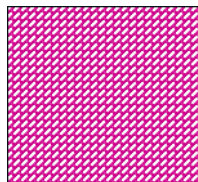
Stripes 5



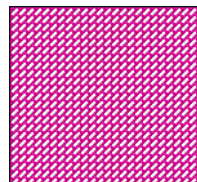
Stripes 6



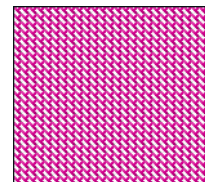
Three Qtr Low Lt



Three Qtr Low Rt



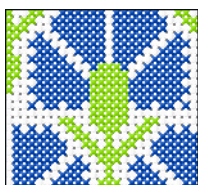
Three Qtr Top Lt



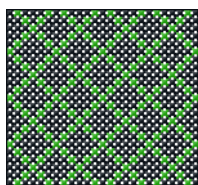
Three Qtr Top Rt

Shapes may be outlined with backstitch, crosses or none.

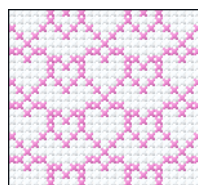
Cross Fancy



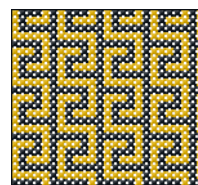
Carnation



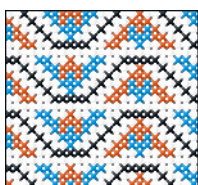
Diamond



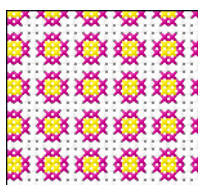
Hearts



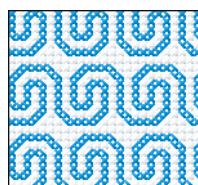
Key 1



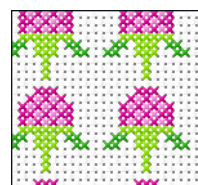
Key 2



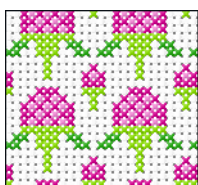
Key 3



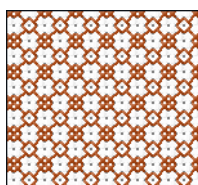
Spiral



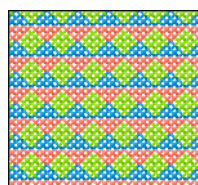
Strawberry 1



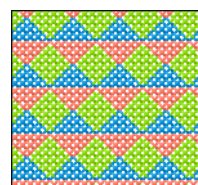
Strawberry 2



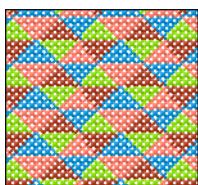
Tile



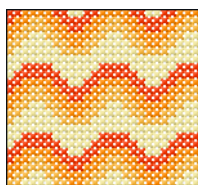
Triangles 1



Triangles 2



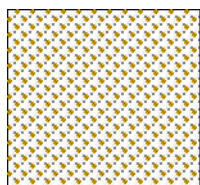
Triangles 3



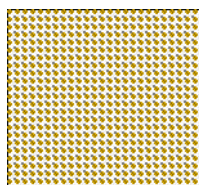
Wave

Create your own Fill Patterns, too!

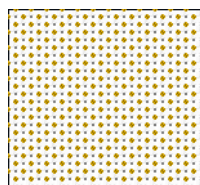
French Knots



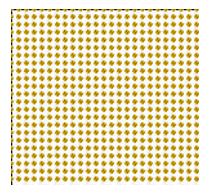
Centers Sparse



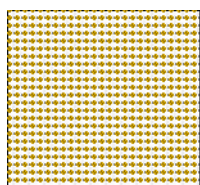
Centers



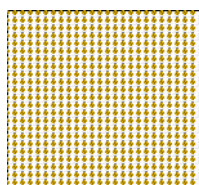
Corners Sparse



Corners



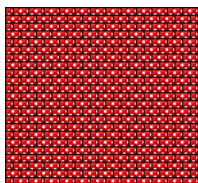
Edges Horizontal



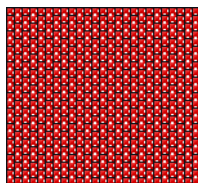
Edges Vertical

French knots are scaled to Cross Size between 2mm and 4mm.

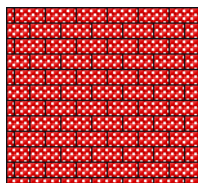
Mixed



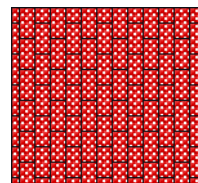
Brick 1



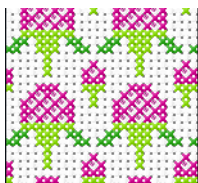
Brick 2



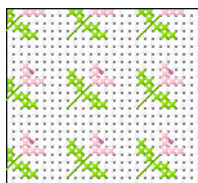
Brick 3



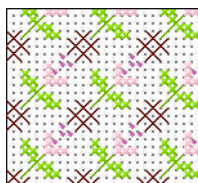
Brick 4



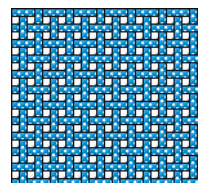
Strawberry



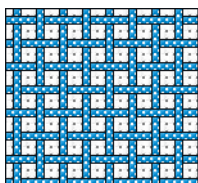
Trellis 1



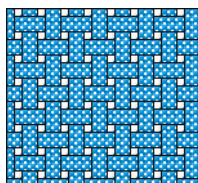
Trellis 2



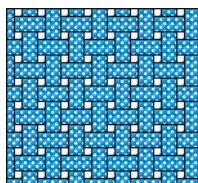
Weave 1



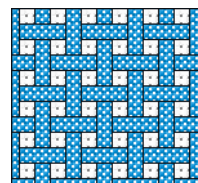
Weave 2



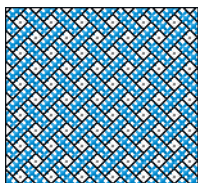
Weave 2



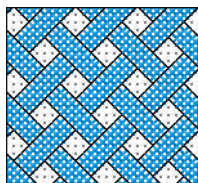
Weave 3



Weave 4



Weave 5



Weave 6

Fill Patterns can contain any mixture of stitch types.